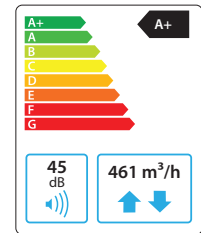


Domekt R 400 H C6M

Maximal air flow, m ³ /h	461
Maximal air flow, l/s	128
Reference flow rate, m ³ /s	0,09
Reference pressure difference, Pa	50
SPI, W/(m ³ /h)	0,27
Thermal efficiency of heat recovery, %	84
Electric air heater capacity, kW / Δt, °C	1/9
Supply voltage, V	1~230
Maximal operating current HE, A	7,3
Electric power input of the fan drive at maximum flow rate, W	113
Electric power input of the fan drive at reference flow rate, W	45
Filters dimensions BxHxL, mm	417x210x46
Unit dimensions BxHxL, mm	515x567x660
Maintenance space, mm	650
Unit weight, kg	49



Acoustic data

A-weighted sound power level L_{WA} , dB(A) at reference flow rate

Supply inlet	56
Supply outlet	65
Exhaust inlet	56
Exhaust outlet	65
Casing	45

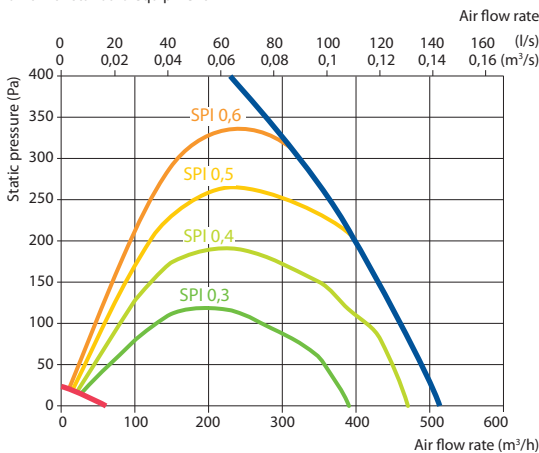
A-weighted sound pressure level L_{PA} , dB(A)

10 m² normally isolated room, distance from casing – 3 m.

Surroundings	34
--------------	----

Performance

Unit with standard equipment

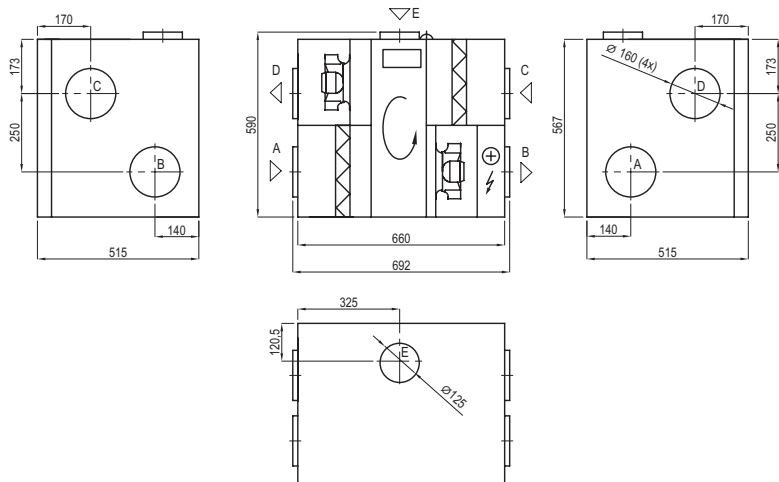


Temperature efficiency

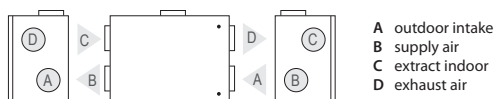
Outdoor temperature, °C	Winter					Summer		
	-23	-15	-10	-5	0	25	30	35
After heat exchanger, °C	14,8	16,1	16,9	17,7	18,5	22,5	23,3	24,1

indoor +22°C, 20 % RH

Shown as right (R1)



Shown as left (L1)



Accessories

Closing damper	AGUJ-M-160+LF230/CM230
Silencer	A/D AGS-160-50-600-M B/C AGS-160-50-900-M
Water heater	DH-160
PPU	PPU-HW-3R-15-0,4-W2
2-way valve (heater)	VVP47.10-0,4

Water cooler	DCW-0,4-3
2-way valve (cooler)	VVP47.10-1,6
Outdoor grill	LD-160
Water heater-cooler	DHCW-160
DX heater-cooler	DCF-0,4-3
Heat pump unit	MOU-12HFN8+KA8140

